



www.AKCP.com

Wake Up / Shutdown Action Wizard

This tutorial provides you the information needed to setup a wake up / shutdown action via the notification wizards.

To get to the starting point of this tutorial:

- Log in as administrator
- Click the “Notifications” tab

1. Adding a notification

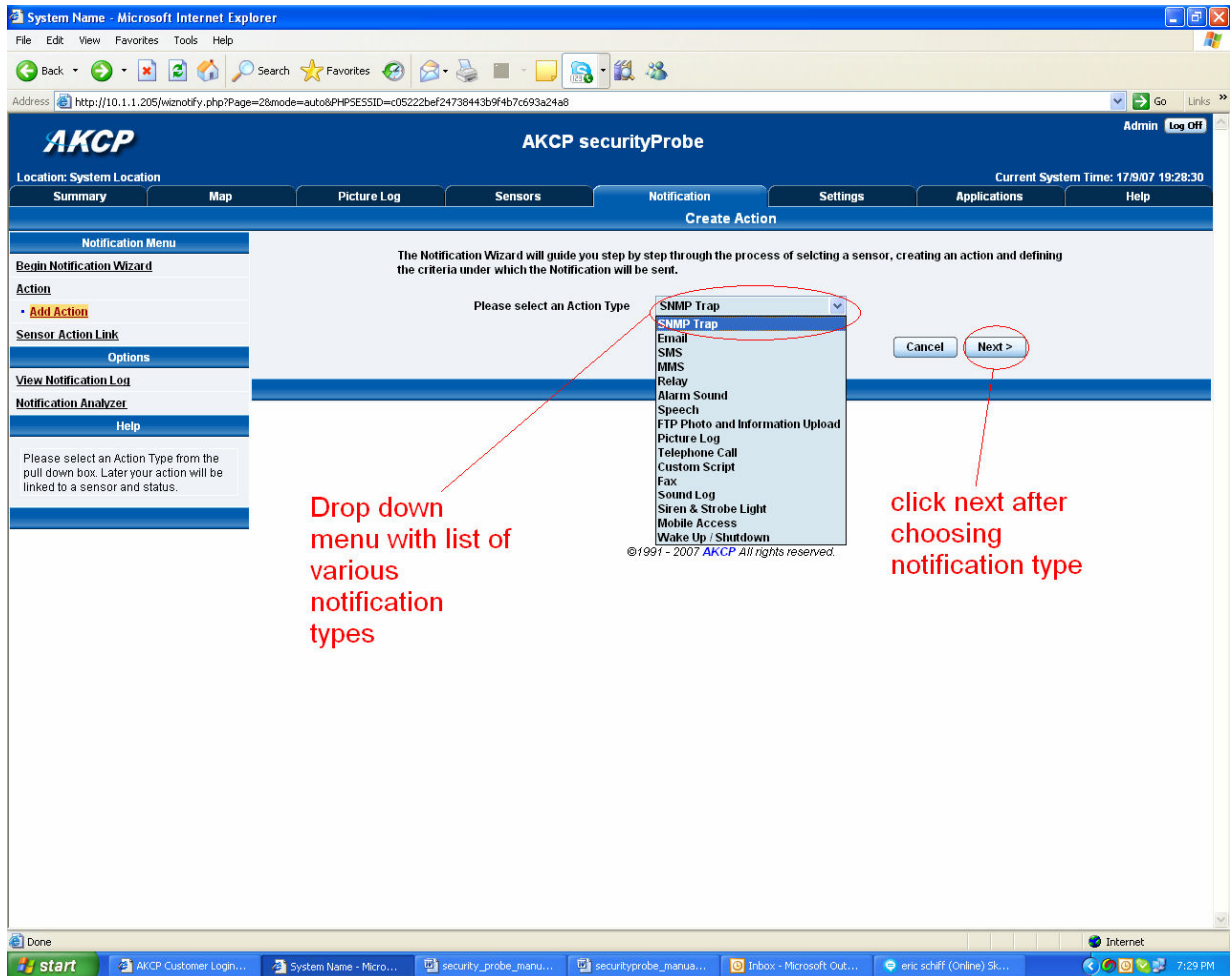
a) First click on the “notification wizard”

The screenshot shows the AKCP securityProbe web interface in Microsoft Internet Explorer. The browser address bar shows `http://10.1.1.205/wiznotify.php`. The page title is "System Name - Microsoft Internet Explorer". The interface has a blue header with the AKCP logo and "AKCP securityProbe". A red box highlights the "Notification" tab in the top navigation bar, with a red arrow pointing to it and the text "Click notification tab". Below the navigation bar, there is a "Notification Menu" section with a red box around the "Begin Notification Wizard" link, and a red arrow pointing to it with the text "Click here to begin setting up a notification". The main content area displays a table of actions:

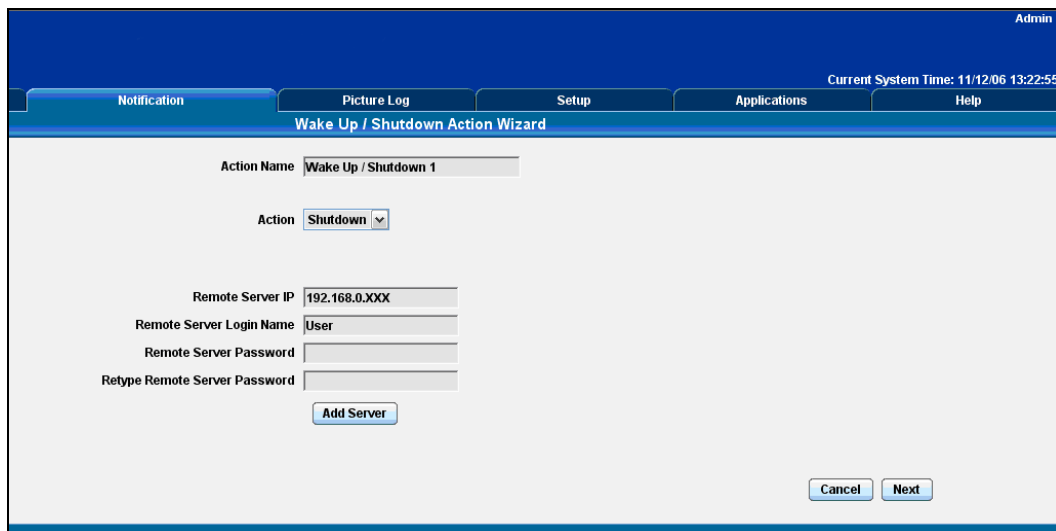
Action Type	Action Name
SNMP Trap	SNMP Trap 1
	SNMP Trap 2
	SNMP Trap 3
	SNMP Trap 4
	SNMP Trap 5
	SNMP Trap 6
Email	Email 1
	Email 2
	Email 3
Alarm Sound	Alarm Sound 1
	Alarm Sound 2
Speech	Speech 1
	Speech 2
	Speech 3
Picture Log	Picture Log 1

Below the table are buttons for "Create", "Duplicate", "Edit", "Remove", and "Test Action". The page footer contains the copyright notice: "©1991 - 2007 AKCP All rights reserved." The Windows taskbar at the bottom shows the start button and several open applications, including "AKCP Customer Login...", "System Name - Micro...", "security_probe_manu...", "securityprobe_manua...", and "Inbox - Microsoft Out...". The system clock shows 7:15 PM.

b) You will now have the notification wizard page displayed, like below.

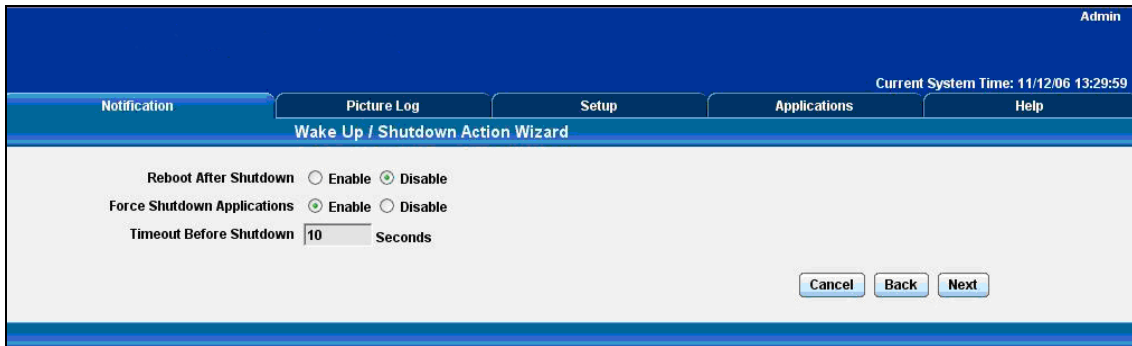


c) Select wake up / shutdown from the notification type options.



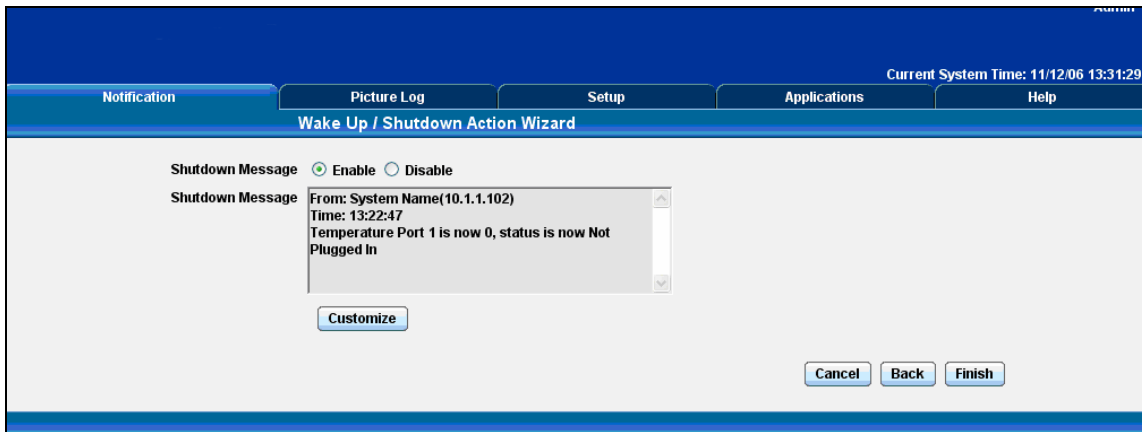
Please choose a name for your **Wake Up / Shutdown** Action. Descriptive Action names increase the simplicity of the system.

Enter the IP address for your server and choose either Shutdown or Wake Up from the Action Pull down box. Then click **Add Server**



Enter the Login details for the remote server.

Select whether you would like to force shutdown of running applications, if you would like to reboot the server after shutdown, and the time before the shutdown commences.



Select if you would like a Shutdown message to be appended to the server log.

This is a preview of the message that will be sent to the server log. The sent message will include the details relevant to your sensor.

Click **Customize** to change the format of this message. The items in your message with a dollar sign and parentheses e.g. `$(TIME)` represents the data to be imported into your message at the time of sending. Please click the **Macro Description** button for a full list.

Click **Finish** to Save your Action