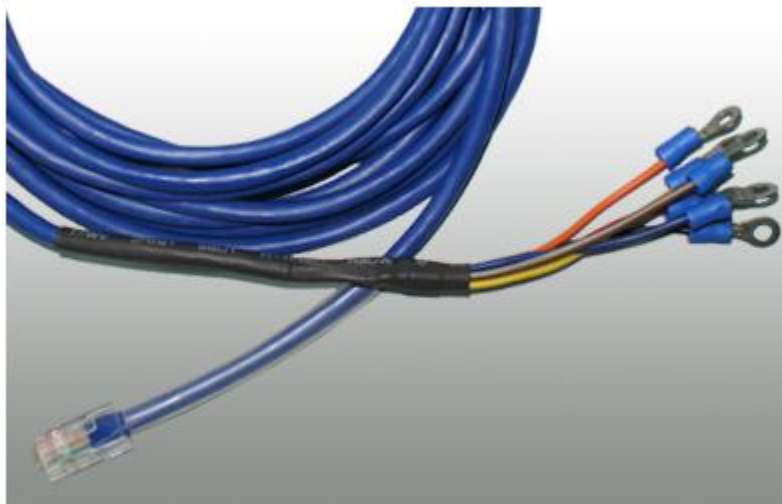




[www.AKCP.com](http://www.AKCP.com)

# 5 Dry Contact Cable User Manual



**Help Version updated till firmware SP413**

*Copyright © 2010, AKCP Co., Ltd..*

## 1) [Introduction](#)

1. [What is a 5 Dry Contact Cable?](#)
2. [How to use this manual](#)
3. [Package Contents](#)

## 2) [Installation](#)

1. [Before you begin](#)
2. [Connecting to the base unit](#)
3. Setup of the 5 Dry Contact Cable

## 3) [Setup](#)

## 4) [FAQ](#)

## 1) Introduction

### What is a 5 Dry Contact Cable?

The 5 Dry Contact Cable extends your sensorProbe2 capabilities by allowing you to monitor an extra 5 dry contacts per port giving you a maximum of 10 dry contacts on a single sensorProbe2 device.

### How to use this manual

This manual is meant to provide the user with a step by step guide on how to configure and set up their unit. It utilizes screen shots in an effort to make things simpler for the user to follow. It is split up into sections that form “mini tutorials”. These cover the basic set up and common configurations of the unit, and give an introduction to its most useful features.

At the end of the manual there is a FAQ section that provides some further in-depth information regarding specific set ups and answers some commonly asked questions. If you need any further information or help with using your unit then please contact us on [support@akcp.com](mailto:support@akcp.com) and one of our technical support staff will be only to pleased to help you with any information you require.

## 3. Package Contents

Your 5 Dry Contact Cable package contains the following items:-

- 1x 15ft 5 Dry Contact Cable

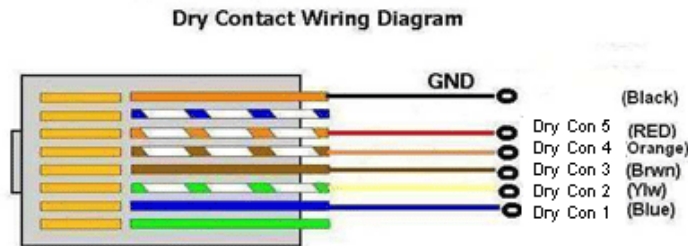
## 2) Installation

### 1. Before you begin

Before we begin with the installation of the sensor it's important for you to know that this product only works with the AKCP sensorProbe2. You will also need to purchase an unlock code for your unit this can be by contacting [sales@akcp.com](mailto:sales@akcp.com).

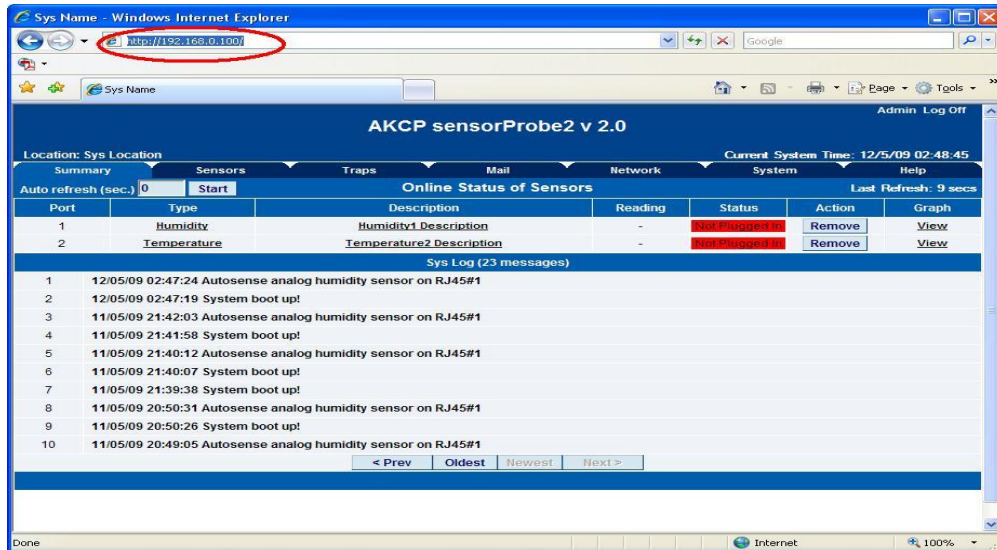
### 2. Connecting to the base unit

To be able to use your 5 Dry Contact Cable you will first need to connect it to one of the RJ45 ports on the rear of your sensorProbe2. Below is a diagram which shows how each dry contact is connected through the single RJ45 port:-

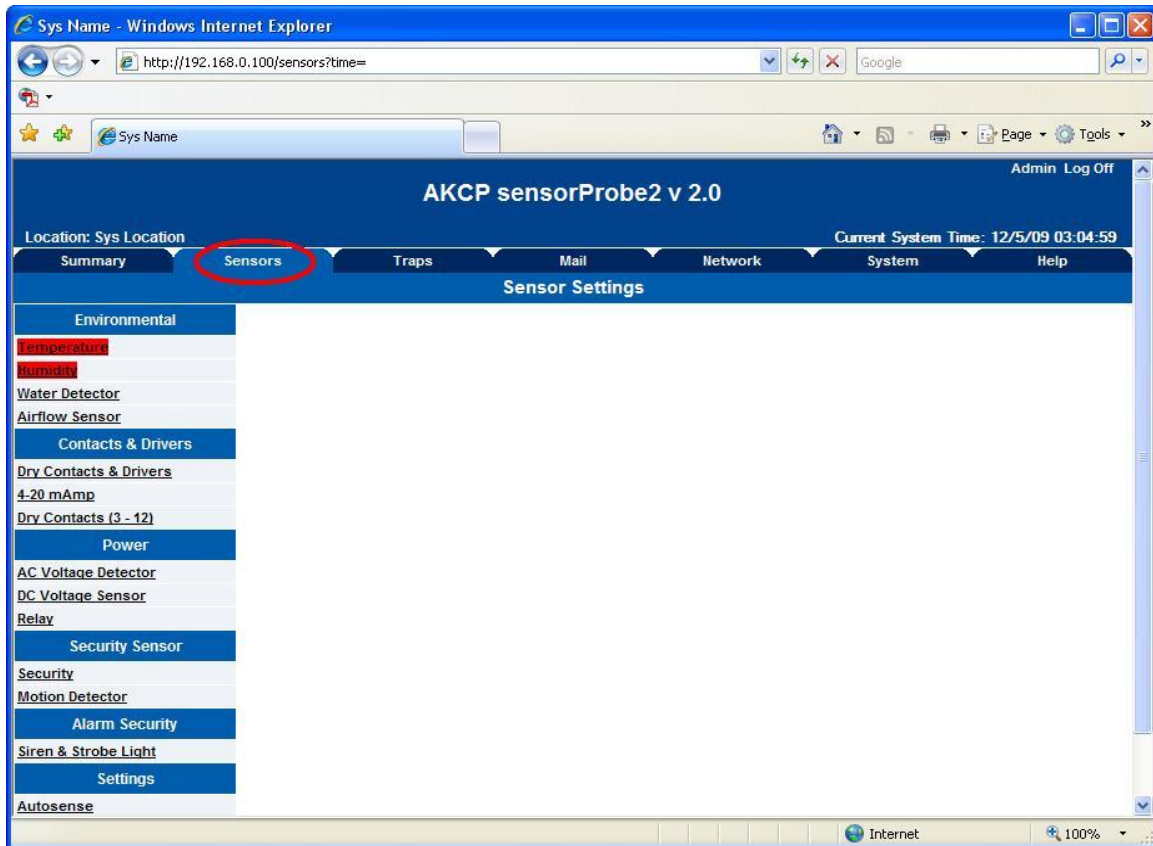


### 3. Setup of the 5 Dry Contact Cable

Once you have connected the sensor you will need to point your browser to the IP address of the unit (default, 192.168.0.100). Next you need to login as the administrator using your administrator password (default is "public"). You will then be taken to the summary page. This is shown below.



Now click the “Sensors” tab at the top of the page:-

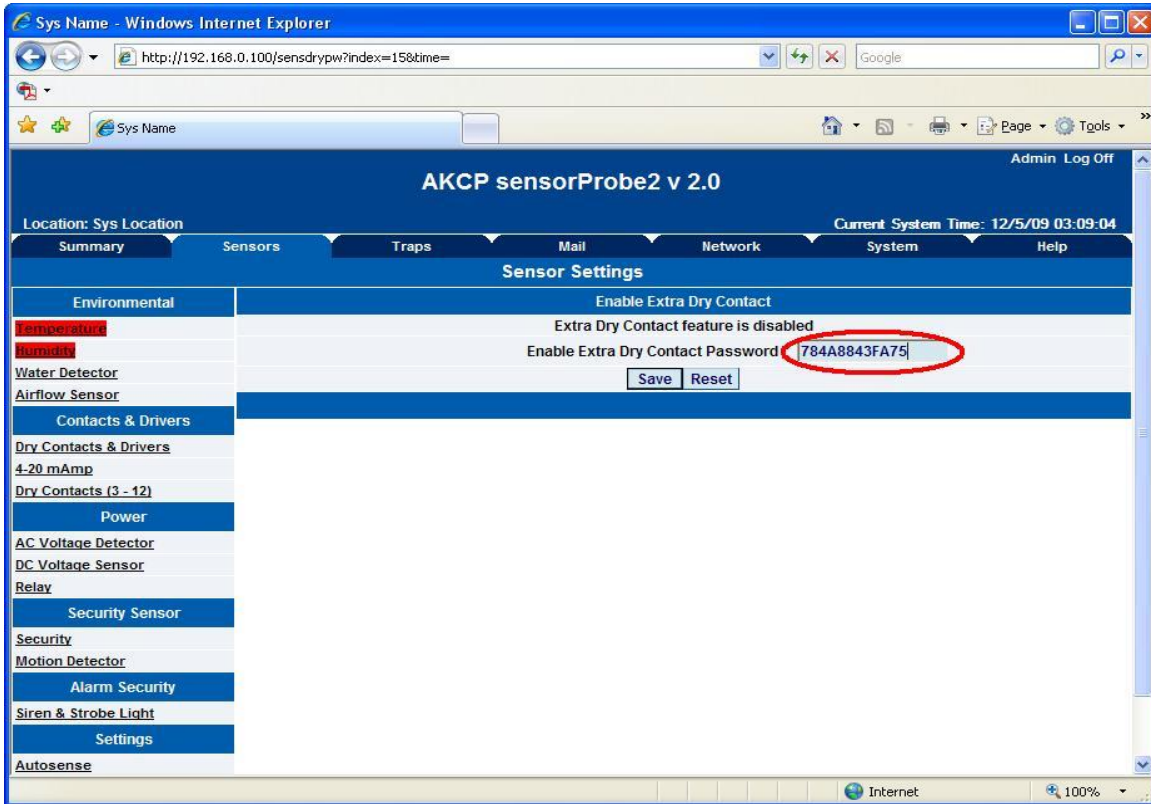


Once you are on the Sensors page you will need to select “Dry Contacts” from the list on the left side of the page as shown below:-



Once you are on the Sensors page you will need to select “Dry Contacts” from the list on the left side of the page as shown here.

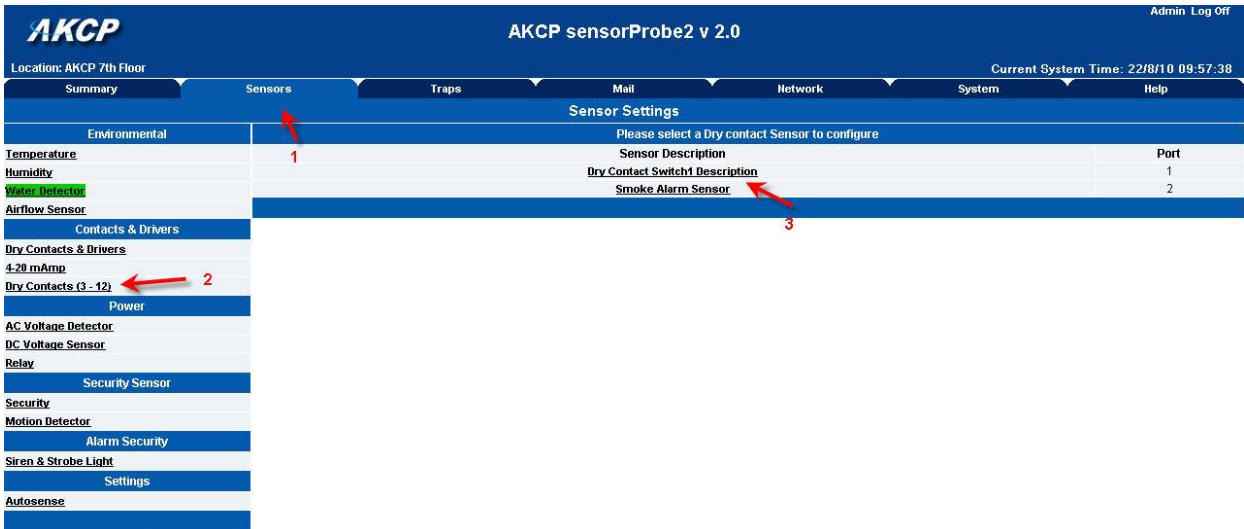
Once you have clicked the “Dry Contact” option you will be taken to the following page:-



Enter your password in the “Enable Extra Dry Contact Password” box and click “Save”. You have now setup your dry contact sensor.

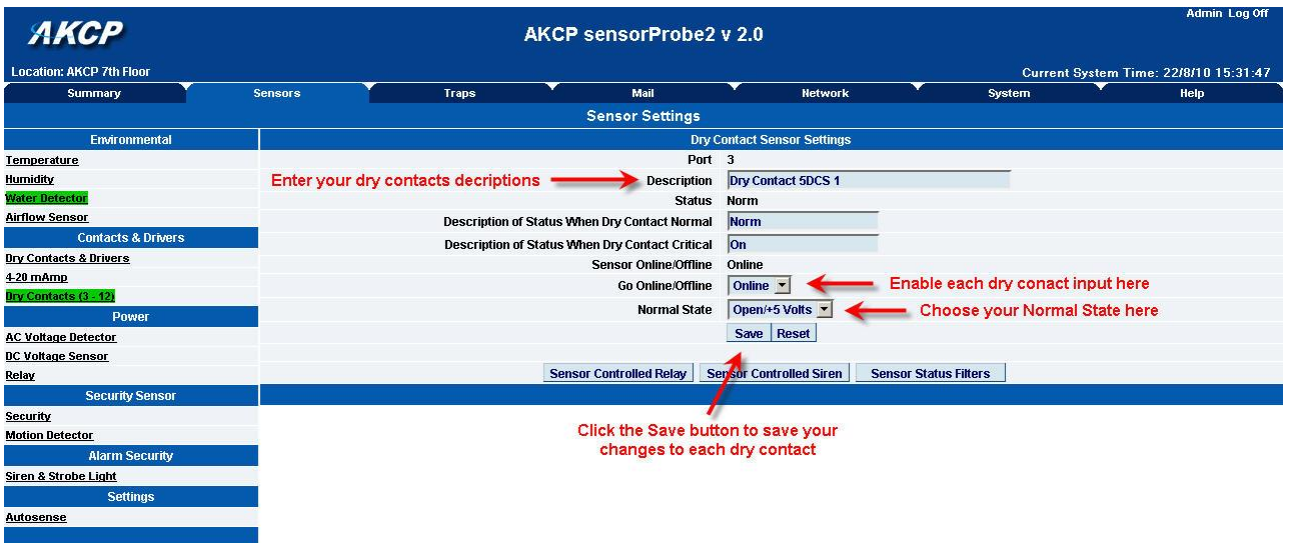
*(continued on next page)*

### 3) Setup



©2003 AKCP Inc. All rights reserved.

Click on the Sensors page, then click on the Dry Contacts (3 – 12) in the “Contacts & Drivers” column, then click on the dry contact switch Description on port 1 as shown above.



©2003 AKCP Inc. All rights reserved.

Now enter your all of your dry contacts descriptions, descriptions of status (if you don't see this, note the reason below), enable all the dry contacts, the normal state then save your configurations. Note: the 5DCS dry contacts can only be setup as inputs and cannot be setup as outputs. Maximum input is 5VDC.

**AKCP** AKCP sensorProbe2 v 2.0 Admin Log Off

Location: AKCP 7th Floor Current System Time: 22/8/10 10:10:40

Summary Sensors Traps Mail Network System Help

### Sensor Settings

Please select a Dry contact Sensor to configure

Environmental	Sensor Description	Port-Switch
Temperature	Dry Contact 5DCS 1	1-3
Humidity	Dry Contact 5DCS 2	1-4
Water Detector	Dry Contact 5DCS 3	1-5
Airflow Sensor	Dry Contact 5DCS 4	1-6
Contacts & Drivers	Dry Contact 5DCS 4	1-7
Dry Contacts & Drivers	Hot Connected	2-8
4.28 mAmp	Hot Connected	2-9
Dry Contacts (3 - 12)	Hot Connected	2-10
Power	Hot Connected	2-11
AC Voltage Detector	Hot Connected	2-12
DC Voltage Sensor		
Relay		
Security Sensor		
Security		
Motion Detector		
Alarm Security		
Siren & Strobe Light		
Settings		
Autosense		

©2003 AKCP Inc. All rights reserved.

You will now see the list of dry contacts that are now online as shown above.

**AKCP** AKCP sensorProbe2 v 2.0 Admin Log Off

Location: AKCP 7th Floor Current System Time: 22/8/10 10:11:28

Summary Sensors Traps Mail Network System Help

### Sensor Settings

#### Dry Contact Sensor Settings

Port: 7

Description: Dry Contact 5DCS 5

Status: On

Description of Status When Dry Contact Normal: On

Description of Status When Dry Contact Critical: Off

Sensor Online/Offline: Online

Go Online/Offline: Online

Normal State: Open/+5 Volts

Save Reset

Sensor Controlled Relay Sensor Controlled Siren Sensor Status Filters

©2003 AKCP Inc. All rights reserved.

If you do not see this option for entering the status descriptions, then you have the older sensorProbe2 with the mega128 memory chip.



Admin Log Off

**AKCP sensorProbe2 Online Demo Unit**

Location: ACKP Bangkok Office Current System Time: 23/7/10 11:11:36

Summary Sensors Traps Mail Network System Help

**Sensor Settings**

Environmental	Dry Contact Sensor Settings
Temperature	Port 3
Humidity	Description Dpy Contact Switch3 Description
Water Detector	Status No Status
<b>Airflow Sensor</b>	Sensor Online/Offline Online
Contacts & Drivers	Go Online/Offline Online
Dry Contacts & Drivers	Normal State Open/+5 Volts
4-20 mAmp	Save Reset
Dry Contacts (3 - 12)	
Power	Sensor Controlled Relay
AC Voltage Detector	Sensor Controlled Siren
DC Voltage Sensor	Sensor Status Filters
Relay	
Security Sensor	
Security	
Motion Detector	
Alarm Security	
Siren & Strobe Light	
Settings	
Autosense	

©2003 AKCP Inc. All rights reserved.

This screen shot above shows the dry contact options on an sensorProbe2 that has the older mega128 memory chip.

## 4) FAQ

**Question #1:** I have a DCS15, or normal AKCP dry contact sensor (single RJ45), what is the difference between this sensor and my 5DCS sensor?

Answer: The difference is the 5DSC is input only, where the DCS15 is both input and output.

**Question #2:** What is the OID for the 5DCS?

Answer: You would use the same OID for the 10 dry contact as you would for the switch sensor type or single dry contact sensor.

sensorProbeSwitchStatus OID = 1.3.6.1.4.1.3854.1.2.2.1.18.1.3.X